

## COILS FOR M&M INTERNATIONAL SOLENOID VALVES

Coils manufactured by M&M International are designed for continuous duty in conformity to the EN60730 safety standards. They are encapsulated in a self-extinguishing synthetic material and offer high mechanical protection and excellent thermal dissipation. They are fully interchangeable on all M&M International solenoid valves, thereby reducing warehouse inventories.

### TECHNICAL DATA

Series **2000**: connection to DIN 46244

Electrical connection: fast on connection 6.3x0.8

Series **7000**: connection to DIN EN 175301-803 form A  
(ex DIN 43650-A)

Protection class: IP 65 (CEI EN60529) - NEMA 4 (UL 50)  
with connector and gasket

Insulation class (compliant with EN60730): "F" and "H"

Operation: continuous

| Voltage tolerance: | AC          | DC         |
|--------------------|-------------|------------|
|                    | +10% ÷ -15% | +10% ÷ -5% |

| Coil power:        | AC                              | DC  |
|--------------------|---------------------------------|-----|
| SERIES <b>2000</b> | 10VA (holding)<br>16VA (inrush) | 7W  |
| SERIES <b>7000</b> | 18VA (holding)<br>36VA (inrush) | 14W |

### OPTIONS

Class "H" insulation coils series 2000/7000: e.g. coil 7251

UL Approved coils series 2000/7000: e.g. coil 240R

Coil series 8000 available on request

Impregnated coils for use in damp/humid environments are available on request: e.g. coil B400 for series 2000 and D700 for series 7000. Must be used with connector and gasket (see page 45 for more information)

### NOTES

Custom voltages and low power consumption available: please contact M&M Sales Department

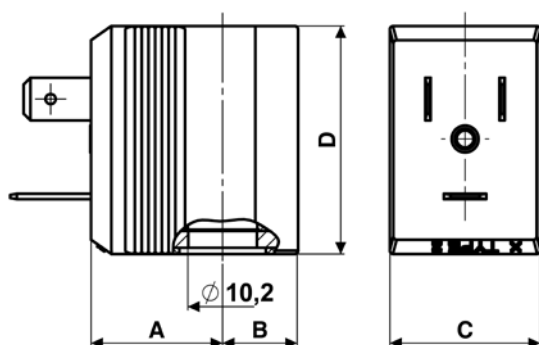
### SERIES: 2000 - 7000



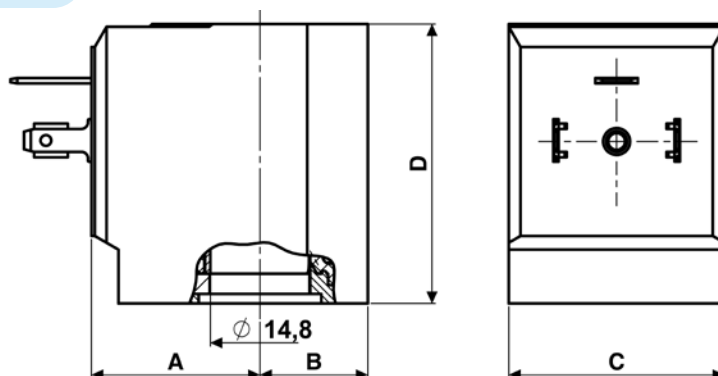
### SELECTION TABLE

| CODE | voltage               | power<br>holding    inrush |      | class        | ambient temp.<br>min            max |       | media temp.<br>min            max |        | ED   |
|------|-----------------------|----------------------------|------|--------------|-------------------------------------|-------|-----------------------------------|--------|------|
| 2150 | 12V DC                | 7W                         | —    | “F”<br>155°C | -10°C                               | +50°C | -10°C                             | +130°C | 100% |
| 2250 | 24V DC                |                            |      |              |                                     |       |                                   |        |      |
| 2350 | 48V DC                |                            |      |              |                                     |       |                                   |        |      |
| 2100 | 12V 50/60Hz           | 10VA                       | 16VA |              |                                     |       |                                   |        |      |
| 2200 | 24V 50/60Hz           |                            |      |              |                                     |       |                                   |        |      |
| 2300 | 48V 50/60Hz           |                            |      |              |                                     |       |                                   |        |      |
| 2400 | 110V 50Hz - 120V 60Hz |                            |      |              |                                     |       |                                   |        |      |
| 2600 | 200V 50Hz - 220V 60Hz |                            |      |              |                                     |       |                                   |        |      |
| 2700 | 230V 50Hz - 240V 60Hz |                            |      |              |                                     |       |                                   |        |      |
| 7150 | 12V DC                | 14W                        | —    |              |                                     |       |                                   |        |      |
| 7250 | 24V DC                |                            |      |              |                                     |       |                                   |        |      |
| 7350 | 48V DC                |                            |      |              |                                     |       |                                   |        |      |
| 7100 | 12V 50/60Hz           | 18VA                       | 36VA |              |                                     |       |                                   |        |      |
| 7200 | 24V 50/60Hz           |                            |      |              |                                     |       |                                   |        |      |
| 7300 | 48V 50/60Hz           |                            |      |              |                                     |       |                                   |        |      |
| 7400 | 110V 50Hz - 120V 60Hz |                            |      |              |                                     |       |                                   |        |      |
| 7600 | 200V 50Hz - 220V 60Hz |                            |      |              |                                     |       |                                   |        |      |
| 7700 | 230V 50Hz - 240V 60Hz |                            |      |              |                                     |       |                                   |        |      |

## COILS - DIMENSIONS & WEIGHTS



Coil series 2000



Coil series 7000

DIMENSIONS & WEIGHTS

| Series | A    | B    | C    | D    | weight |
|--------|------|------|------|------|--------|
| [code] | [mm] | [mm] | [mm] | [mm] | [kg]   |
| 2000   | 19.5 | 11.2 | 22.3 | 33.7 | 0.060  |
| 7000   | 25   | 16   | 32   | 41.4 | 0.146  |
|        |      |      |      |      |        |
|        |      |      |      |      |        |
|        |      |      |      |      |        |

## DIN CONNECTORS FOR SOLENOID VALVES

Coil connectors provide the safest flexible system for connecting M&M International solenoid valves and give a protection class of IP65. They are designed and made of synthetic material offering a high level of electrical insulation. Compliance with UL 1977 and VDE Regulations.

### TECHNICAL DATA

|                       |                            |
|-----------------------|----------------------------|
| Rated voltage (Max.): | 250V AC / 300V DC          |
| Nominal current:      | 10 A (Rated) / 16A (Max.)  |
| Wire cross-section:   | 1.5 mm <sup>2</sup> (Max.) |
| Cable entry:          | PG9 (6 – 8 mm)             |
| Protection class:     | IP 65 (only with gasket)   |
| Insulation class:     | group C - VDE 0110         |
| Housing colour:       | black                      |

### OPTIONS

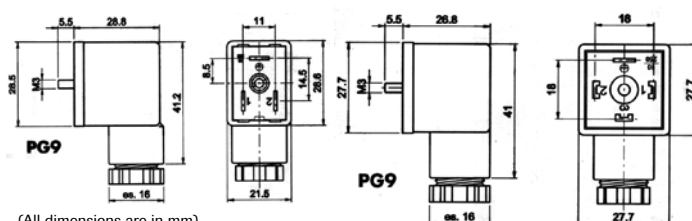
- Connectors with protection circuits
- Connectors with LED
- Connectors with flying leads

### NOTES

Connectors are supplied with thermoplastic rubber bordered gasket, fixing screw and preinstalled position with ground H 12 (the connector can be spinned when connected)

Other versions available upon request and depending on quantity: please contact M&M Sales Department.

SERIES: 600 001 00- / 600 011 00-



(All dimensions are in mm)

For coil series 2000, connector code 600 001 00-, weight: 0.019 Kg

For coil series 7000, connector code 600 011 00-, weight: 0.020 Kg